

QPD8-500-18000-20-S

8-Way, 0.5~18GHz

Features:
 * Small Size
 * Low Insertion Loss

Applications:
 * Amplifiers
 * Mixers
 * Antennas
 * Laboratory Test

Electrical

Frequency:	0.5~18GHz
Insertion Loss:	6dB max.
Input VSWR:	2.0 max.
Output VSWR:	1.6max.
Isolation:	14dB min.
Amplitude Balance:	0.8dB max.
Phase Balance:	±10°
Impedance:	50Ω
Average Power:	20W max. 1W max. as combiner

Mechanical

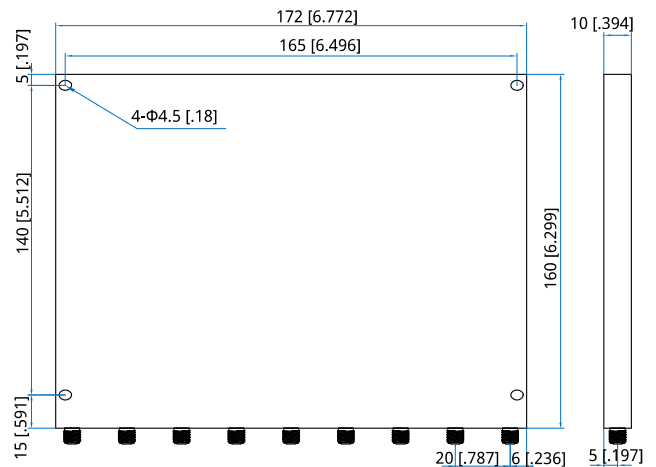
Size*1:	172*160*10mm 6.772*6.299*0.394in
Weight:	678g
Connectors:	SMA Female
Mounting:	4-Φ4.5mm through-hole

[1] Exclude connectors.

Environmental

Operation Temperature:	-45~+85°C
------------------------	-----------

Outline Drawings



Unit: mm [in]
 Tolerance: ±0.5mm [±0.02in]

How To Order

QPD8-500-18000-20-S

Customization is available upon request.